

# GRADE 2/CHALLENGER

For samples please contact Ennis Fabrics:  
877-953-6647 | [orders@ennisfabrics.com](mailto:orders@ennisfabrics.com) | [ennisfabrics.com](http://ennisfabrics.com)



91 DOVE



61 WHITE CAP



602 MYSTIC WHITE



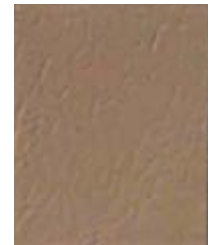
63 VANILLA



605 CREAM



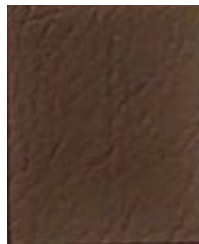
903 FOG



609 TAUPE



802 MOCHA



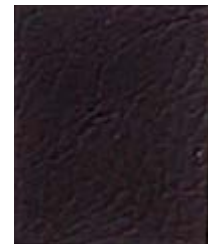
805 BARK



86 EARTH



87 CHESTNUT



809 CHOCOLATE



902 SEAGULL



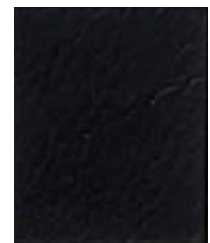
905 STEEL



97 SLATE



908 CHINCHILLA  
WITH ENCOOL



909 RAVEN  
WITH ENCOOL



Automotive



Corporate



Education



Fitness



Hospitality



Healthcare



Marine



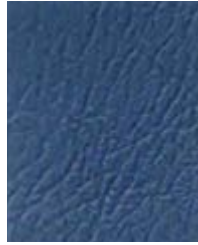
Recreational Vehicle



Residential



37 SMOKEY BLUE



303 DENIM BLUE



35 ROYAL  
WITH ENCOOL



306 NAVAL BLUE  
WITH ENCOOL



308 MIDNIGHT BLUE  
WITH ENCOOL



31 LAGOON



54 CITRON



21 MEADOW



205 SPRING



24 DEEP TEAL



44 PUMPKIN SPICE



14 CHERRY RED



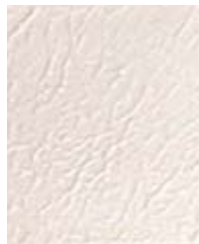
17 GARNET



108 WINE



109 PLUM



66 DIAMOND



64 PEARL



605 CHAMPAGNE



34 SPA



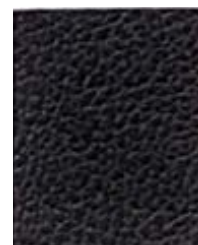
83 TAN



804 AMBER



88 TOBACCO



98 CHARCOAL

ENCOOL technology keeps Challenger's darkest colors up to 10% cooler in direct sunlight than traditional PVC fabrics.

# CHALLENGER

<b>PRODUCT NAME</b>	Challenger
<b>PRODUCT DESCRIPTION</b>	Challenger is the next generation of PVC performance in a metallic, spa blue color. It features a buttery soft hand, Endurepel Armour performance finish, and excellent durability.
<b>NUMBER OF COLORS</b>	40
<b>ABRASION</b>	1,500,000 Double Rubs
<b>BRAND</b>	Endurepel
<b>BREAKING</b>	Passes ASTM D751-06: Procedure A, CFPA 17-2013 - Weft 94 x Warp 101 l
<b>CLEANING CODE</b>	W - Clean fabrics with water-based cleaning agents or water-based foam
<b>CLEANER DISCLAIMER</b>	Dilution ratios must be followed. Materials must be wiped with clean water after use and wiped dry with a clean cloth.
<b>COLD CRACK</b>	Product Cold Crack is equal to or greater than -55 degrees C (-67 F)
<b>COLLECTION</b>	Challenger
<b>CONSTRUCTION</b>	Vinyl
<b>CONTENT</b>	100% Polyvinyl Chloride (PVC)
<b>CONTENT BACKING</b>	100% Polyester
<b>CROCKING</b>	AATCC 8: Dry = Class 5, AATCC 8: Wet = Class 5
<b>ECOFRIENDLY</b>	Phthalate Free, FR Additive Free
<b>ELONGATION</b>	Passes ASTM D751 - Weft 116% x Warp 64%
<b>FEATURES</b>	Passes AATCC 107-2013 Colorfastness to Bleach - Class 5.0, Passes AATCC 147-2011 - Anti-Bacterial, Passes ASTM G21-13 - Anti-Fungal, Passes ASTM D751-06 Coating Adhesion - Weft 4.4 x Warp 5.3 lbs, Passes ASTM E 1428-15A Pink Stain Resistance

<b>FINISH</b>	Endurepel Armour - Stain and Soil Resistant, Anti-Bacterial
<b>FIRE RETARDANCY</b>	CALTB117-2013, IMO FTP Code 2010 - Part 8, MVSS302, NFPA 260 Class 1, UFAC Class 1
<b>INDUSTRY</b>	Automotive, Contract, Education, Fitness, Healthcare, Hospitality, Marine, Office, Residential, RV, Transportation
<b>MILDEW RESISTANCE</b>	Mildew Resistant
<b>RAILROADED</b>	Non Railroaded
<b>ROLL SIZE</b>	30 yd (27 m)
<b>SEAM SLIPPAGE</b>	Passes ASTM D751 - Weft 64 x Warp 67 lb
<b>TEAR STRENGTH</b>	Passes ASTM D2261 - Weft 13 x Warp 10 lb, Passes ASTM D751 - Weft 12 x Warp 10 lb
<b>TENSILE STRENGTH</b>	Passes ASTM D751 - Weft 94 x Warp 101 lb
<b>THICKNESS</b>	Product thickness is 1.10 mm
<b>UV RESISTANCE</b>	Colorfastness to Light AATCC 16.3 - Grade 4 (1500 Hours)
<b>USES</b>	Automotive Seating, Bags, Decorative Accessories, Healthcare Seating, Hospitality Seating, Marine Seating, Office Seating, Residential Seating, RV Fabrics
<b>WEIGHT</b>	736.00 gs/m <sup>2</sup> , 33.17 oz/yd, 21.71 oz/yd <sup>2</sup>
<b>WIDTH</b>	55 in. (140 cm)

## CHALLENGER CARE & CLEANING



For all cleaning methods, clean with a soft, absorptive cloth. Rinse with fresh water to remove cleaning residue and dry thoroughly with a separate dry cloth.

### Method 1

Mild soap and water

### Method 2

Ratio of 1:1 water and isopropyl alcohol

### Method 3

Ratio of 1:10 bleach and water or one of the approved cleaners listed below:  
Virox 5, Oxiver Plus, Oxiver TB, Oxiver TB Wipes, Accel Five, Accel PREvention, Accel PREvention Wipes, Oasis 146

	Bodily Fluids	Coffee	Creamer	Essential Oils	Hot Sauce	Ink	Cosmetics	Lotion	Mustard	Oil Based Condiments	Sharpie	Soda	Tea
Method 1			X	X			X	X		X		X	X
Method 2		X			X	X			X		X		
Method 3	X												



CHALLBCBC  
1119



ENDUREPEL™  
ARMOUR



CANADA 877 953 6647  
USA 877 953 6647  
FAX 888 274 2910  
ORDERS@ENNISFABRICS.COM  
ENNISFABRICS.COM